

**LW-PP65**

19" 1U 48 Ports CAT5E/CAT6/CAT6A UTP Patch Panel



1 U 48 Port

**LW-PPS02B**

19" 1U 24 Ports CAT5E/CAT6/CAT6A UTP Patch Panel

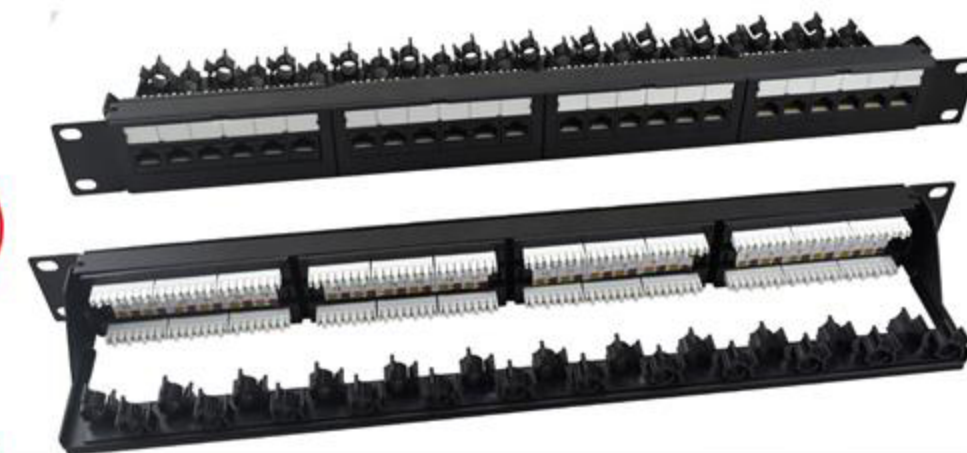
**Features and Benefits**

- \*19"1U patch panel
- \*Spring Wire:Phoshor Bronze
- \*IDC Contact:Phoshor Bronze
- \*Insertion life:≥1000 mating cycles
- \*Operating Temperature Range:  
-60°C to 80°C
- \*IDC Accept:22-26AWG
- \*Wire Scheme:T568A/B

replaceable label

**LW-PPT6**

19" 1U 24 Ports CAT5E/CAT6 UTP Patch Panel

**LW-PP74****LW-PP74B** with normal cable management

19" 1U 24 Ports CAT5E/CAT6/CAT6A UTP Patch Panel

Boold port numbering enables quick  
and ready identification of outlets

Front sureface is uninterrupted by  
screw heads for a clean appearance

Blank anodized panel can be mounted directly  
to an EIA standard 19 inch rack or cabinet

Feature universal wiring for T568A/B  
and voice application

**LW-PP6A-21**

19" 1U 24 Ports CAT5E/CAT6/CAT6A UTP Patch Panel

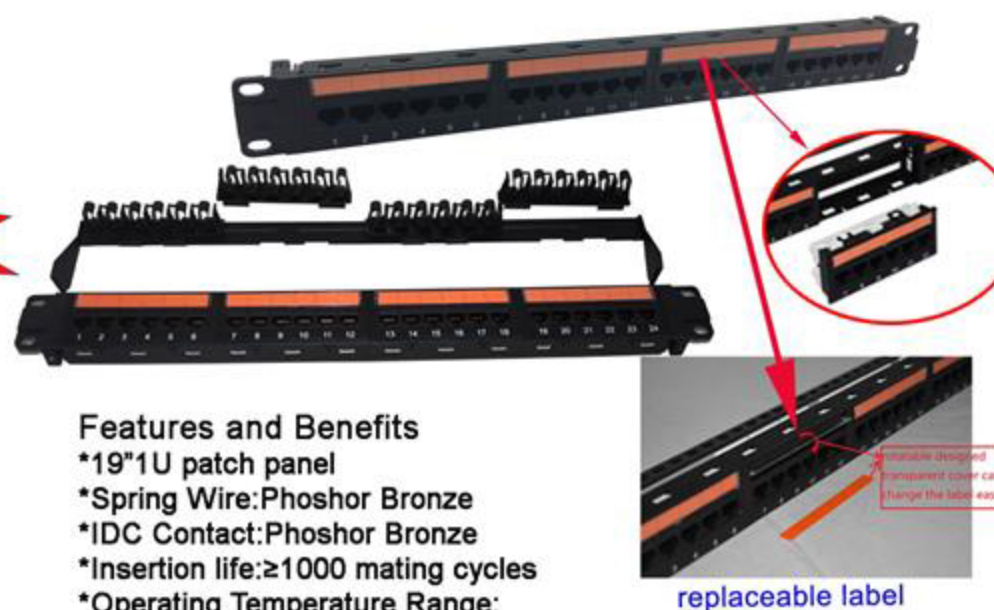


NEW

Dismountable  
Toolless type

**LW-PPS02**

19" 1U 24 Ports CAT5E/CAT6/CAT6A UTP Patch Panel

**Features and Benefits**

- \*19"1U patch panel
- \*Spring Wire:Phoshor Bronze
- \*IDC Contact:Phoshor Bronze
- \*Insertion life:≥1000 mating cycles
- \*Operating Temperature Range:  
-60°C to 80°C
- \*IDC Accept:22-26AWG
- \*Wire Scheme:T568A/B

replaceable label